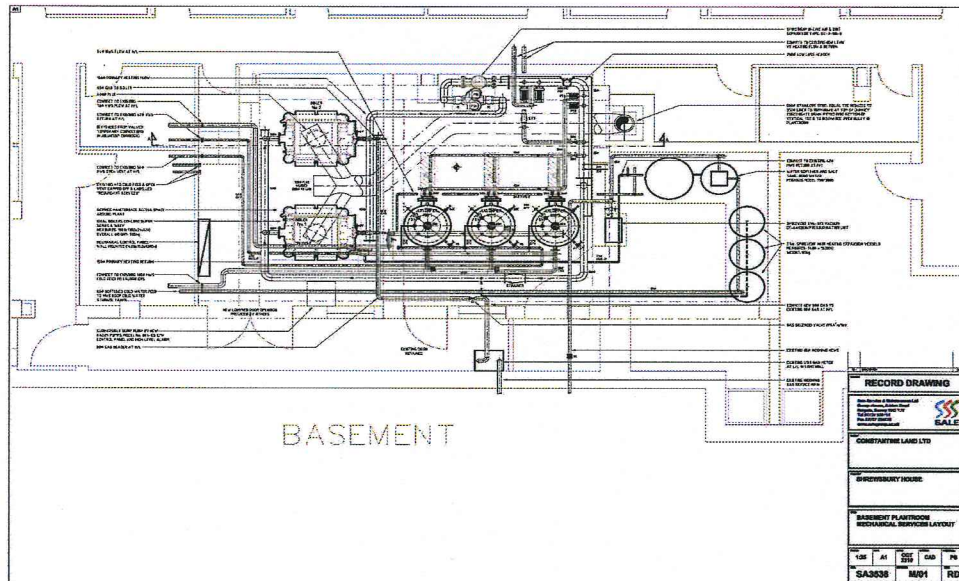


Services : **Boiler House Replacement**
 Client : **Constantine Land**
 Project : **Shrewsbury House, Chaney Walk, London, SW3 5LW**



case study



VALUE: £380k

PROJECT DURATION: 18 weeks

DESCRIPTION:

Provide temporary plant room, remove existing plant room services, installation of boilers, flues associated pumps and controls. Provide builerswork and electrical services. Replace tanks at roof level.

KEY ISSUES:

- Working in fully occupied building
- Maintaining functional services to residents

Architect/Interior Designer: N/A

Main Contractor:

Sale Service & Maintenance Ltd

Project Manager: Andy Bond
M&E Consultant: Flatt Consulting

Employer:
Project Administrator:

Douglas & Gordon
 Flatt Consulting



Mechanical Services

Electrical Services

Maintenance

Plumbing Services

Security Systems